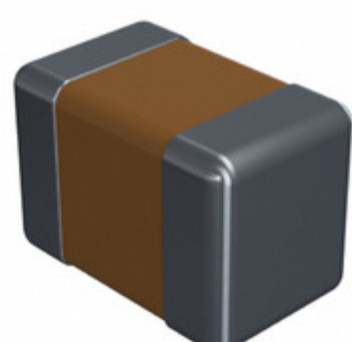


**08055A222FAT2A**



**Part Number:** [08055A222FAT2A](#)  
**Manufacturer:** [AVX Corporation](#)  
**Description:** CAP CER 2200PF 50V NP0 0805  
**Data sheet:** [PDF Ceramic Chip Capacitor Catalog](#)  
[PDF C0G\(NP0\) Dielectric](#)  
[PDF Part Number Explanation](#)

**RoHS Status:** Lead free / RoHS Compliant  
**Ship From:** Hong Kong  
**Shipment Way:** DHL/Fedex/TNT/UPS/EMS

Images are for reference only.  
 See Product Specifications for product details.  
**Buy 08055A222FAT2A with confidence from Component-World.HK, 1 Year Warranty**

[Request For Quotation](#)

**PRODUCT PARAMETER**

|  |                                  |   |  |
|--|----------------------------------|---|--|
| <b>Part Number</b>                     | 08055A222FAT2A                   | <b>Manufacturer</b>                     | <a href="#">AVX Corporation</a>  |
| <b>Description</b>                     | CAP CER 2200PF 50V NP0 0805      | <b>Lead Free Status / RoHS Status</b>   | Lead free / RoHS Compliant   |
| <b>Quantity Available</b>              | 302751 pcs                       | <b>Data sheet</b>                       | <a href="#">Ceramic Chip Capacitor Catalog</a><br><a href="#">C0G(NP0) Dielectric</a><br><a href="#">Part Number Explanation</a> |
| <b>Category</b>                        | <a href="#">Capacitors</a>       | <b>Voltage - Rated</b>                  | 50V  |
| <b>Tolerance</b>                       | ±1%                              | <b>Thickness (Max)</b>                  | 0.055" (1.40mm)  |
| <b>Temperature Coefficient</b>         | C0G, NP0                         | <b>Size / Dimension</b>                 | 0.079" L x 0.049" W (2.01mm x 1.25mm)  |
| <b>Series</b>                          | -                                | <b>Ratings</b>                          | -  |
| <b>Packaging</b>                       | Tape & Reel (TR)                 | <b>Package / Case</b>                   | 0805 (2012 Metric)   |
| <b>Other Names</b>                     | 08055A222FAT2A-ND<br>478-10514-2 | <b>Operating Temperature</b>            | -55°C ~ 125°C  |
| <b>Mounting Type</b>                   | Surface Mount, MLCC              | <b>Moisture Sensitivity Level (MSL)</b> | 1 (Unlimited)  |
| <b>Manufacturer Standard Lead Time</b> | 28 Weeks                         | <b>Lead Style</b>                       | -  |
| <b>Lead Spacing</b>                    | -                                | <b>Lead Free Status / RoHS Status</b>   | Lead free / RoHS Compliant   |
| <b>Height - Seated (Max)</b>           | -                                | <b>Features</b>                         | -  |
| <b>Failure Rate</b>                    | -                                | <b>Detailed Description</b>             | 2200pF ±1% 50V Ceramic Capacitor C0G, NP0 0805 (2012 Metric)   |
| <b>Capacitance</b>                     | 2200pF                           | <b>Applications</b>                     | General Purpose  |

Component-World.com is a Reliable Stocking Distributor of Electronic Components. We specialize in all AVX Corporation series electronic components. We have 302751 pieces of AVX Corporation 08055A222FAT2A in stock available now. Request a quote from electronics components distributor at Component-World.com, our sales team will contact you within 24 hours.

RFQ Email: [info@Components-World.com](mailto:info@Components-World.com)

**RELATED PRODUCTS**

|  |   |   |                     |
|--|---|---|---------------------|
|  | <b>Part#:</b> <a href="#">08055A241GAT2A</a><br><b>Description:</b> CAP CER 240PF 50V NP0 0805      | <b>Manufacturers:</b> <a href="#">AVX Corporation</a> | <a href="#">RFQ</a> |
|  | <b>Part#:</b> <a href="#">08055A221GAT2A</a><br><b>Description:</b> CAP CER 220PF 50V C0G/NP0 0805  | <b>Manufacturers:</b> <a href="#">AVX Corporation</a> | <a href="#">RFQ</a> |
|  | <b>Part#:</b> <a href="#">08055A221KAT2A</a><br><b>Description:</b> CAP CER 220PF 50V C0G/NP0 0805  | <b>Manufacturers:</b> <a href="#">AVX Corporation</a> | <a href="#">RFQ</a> |
|  | <b>Part#:</b> <a href="#">08055A240JAT2A</a><br><b>Description:</b> CAP CER 24PF 50V NP0 0805       | <b>Manufacturers:</b> <a href="#">AVX Corporation</a> | <a href="#">RFQ</a> |
|  | <b>Part#:</b> <a href="#">08055A241JQA2A</a><br><b>Description:</b> CAP CER 240PF 50V NP0 0805      | <b>Manufacturers:</b> <a href="#">AVX Corporation</a> | <a href="#">RFQ</a> |
|  | <b>Part#:</b> <a href="#">08055A240GAT2A</a><br><b>Description:</b> CAP CER 24PF 50V NP0 0805       | <b>Manufacturers:</b> <a href="#">AVX Corporation</a> | <a href="#">RFQ</a> |
|  | <b>Part#:</b> <a href="#">08055A221MAT2A</a><br><b>Description:</b> CAP CER 220PF 50V C0G/NP0 0805  | <b>Manufacturers:</b> <a href="#">AVX Corporation</a> | <a href="#">RFQ</a> |
|  | <b>Part#:</b> <a href="#">08055A221J4T2A</a><br><b>Description:</b> CAP CER 220PF 50V NP0 0805      | <b>Manufacturers:</b> <a href="#">AVX Corporation</a> | <a href="#">RFQ</a> |
|  | <b>Part#:</b> <a href="#">08055A222KAT2A</a><br><b>Description:</b> CAP CER 2200PF 50V NP0 0805     | <b>Manufacturers:</b> <a href="#">AVX Corporation</a> | <a href="#">RFQ</a> |
|  | <b>Part#:</b> <a href="#">08055A241FAT4A</a><br><b>Description:</b> CAP CER 240PF 50V NP0 0805      | <b>Manufacturers:</b> <a href="#">AVX Corporation</a> | <a href="#">RFQ</a> |
|  | <b>Part#:</b> <a href="#">08055A221MAT4A</a><br><b>Description:</b> CAP CER 220PF 50V C0G/NP0 0805  | <b>Manufacturers:</b> <a href="#">AVX Corporation</a> | <a href="#">RFQ</a> |
|  | <b>Part#:</b> <a href="#">08055A221K4T2A</a><br><b>Description:</b> CAP CER 220PF 50V NP0 0805      | <b>Manufacturers:</b> <a href="#">AVX Corporation</a> | <a href="#">RFQ</a> |
|  | <b>Part#:</b> <a href="#">08055A221GAT4A</a><br><b>Description:</b> CAP CER 220PF 50V C0G/NP0 0805  | <b>Manufacturers:</b> <a href="#">AVX Corporation</a> | <a href="#">RFQ</a> |
|  | <b>Part#:</b> <a href="#">08055A222JAT2A</a><br><b>Description:</b> CAP CER 2200PF 50V C0G/NP0 0805 | <b>Manufacturers:</b> <a href="#">AVX Corporation</a> | <a href="#">RFQ</a> |
|  | <b>Part#:</b> <a href="#">08055A221JAT2A</a><br><b>Description:</b> CAP CER 220PF 50V C0G/NP0 0805  | <b>Manufacturers:</b> <a href="#">AVX Corporation</a> | <a href="#">RFQ</a> |
|  | <b>Part#:</b> <a href="#">08055A241KAT2A</a><br><b>Description:</b> CAP CER 240PF 50V NP0 0805      | <b>Manufacturers:</b> <a href="#">AVX Corporation</a> | <a href="#">RFQ</a> |
|  | <b>Part#:</b> <a href="#">08055A221GHT6A</a><br><b>Description:</b> CAP CER 220PF 50V NP0 0805      | <b>Manufacturers:</b> <a href="#">AVX Corporation</a> | <a href="#">RFQ</a> |
|  | <b>Part#:</b> <a href="#">08055A221KAT4A</a><br><b>Description:</b> CAP CER 220PF 50V C0G/NP0 0805  | <b>Manufacturers:</b> <a href="#">AVX Corporation</a> | <a href="#">RFQ</a> |
|  | <b>Part#:</b> <a href="#">08055A222GAT2A</a><br><b>Description:</b> CAP CER 2200PF 50V NP0 0805     | <b>Manufacturers:</b> <a href="#">AVX Corporation</a> | <a href="#">RFQ</a> |
|  | <b>Part#:</b> <a href="#">08055A241JAT2A</a><br><b>Description:</b> CAP CER 240PF 50V NP0 0805      | <b>Manufacturers:</b> <a href="#">AVX Corporation</a> | <a href="#">RFQ</a> |

**Related keywords for 08055A222FAT2A**

|   |  |   |                                      |
|---|--|---|--------------------------------------|
| <a href="#">AVX Corporation 08055A222FAT2A</a>    | <a href="#">08055A222FAT2A distributor</a>           | <a href="#">08055A222FAT2A supplier</a> | <a href="#">08055A222FAT2A price</a> |
| <a href="#">08055A222FAT2A download datasheet</a> | <a href="#">08055A222FAT2A datasheet</a>             | <a href="#">08055A222FAT2A stock</a>    | <a href="#">buy 08055A222FAT2A</a>   |
| <a href="#">AVX Corporation 08055A222FAT2A</a>    | <a href="#">AVX Corporation [MIL] 08055A222FAT2A</a> |   |                                      |